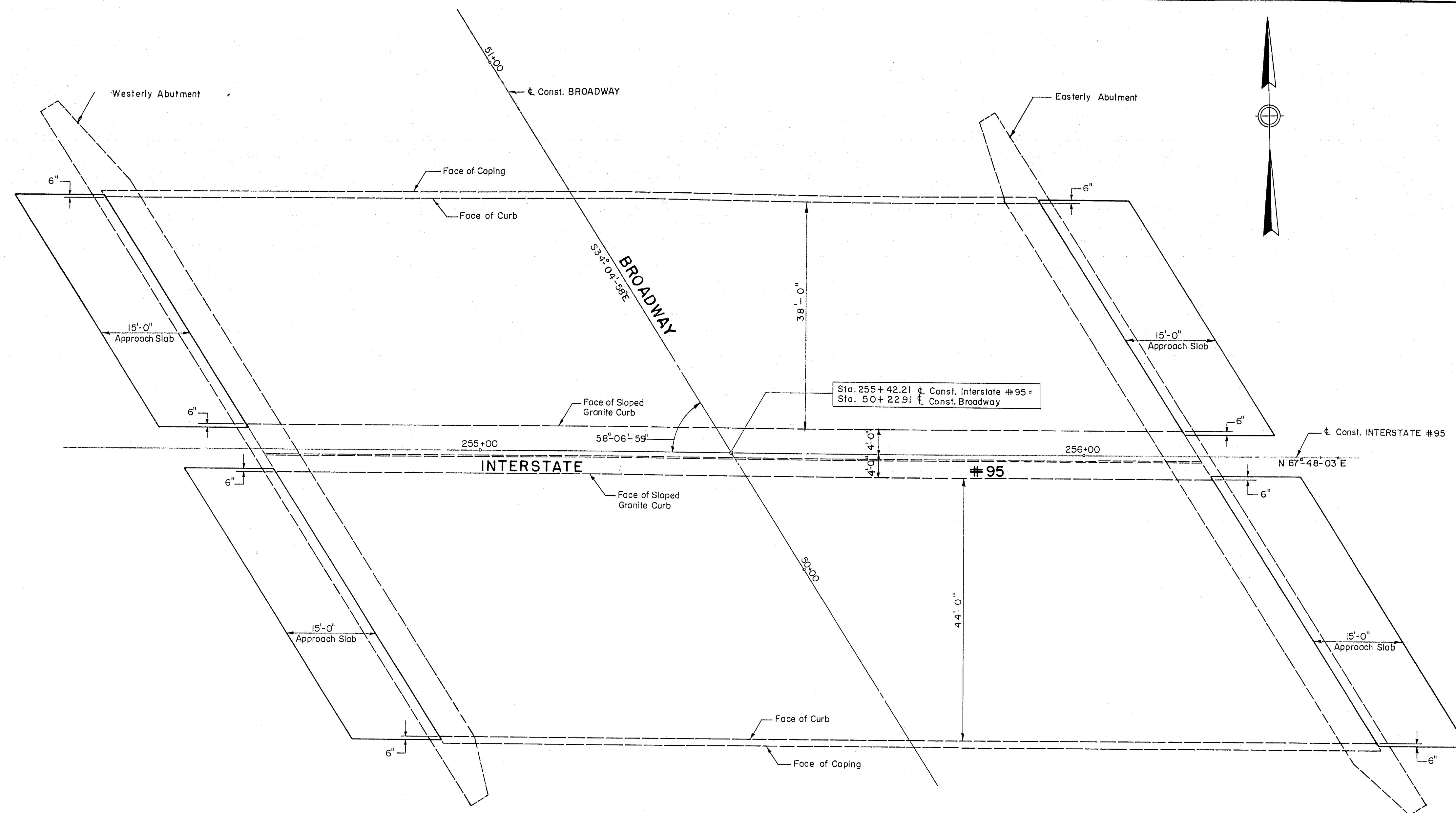


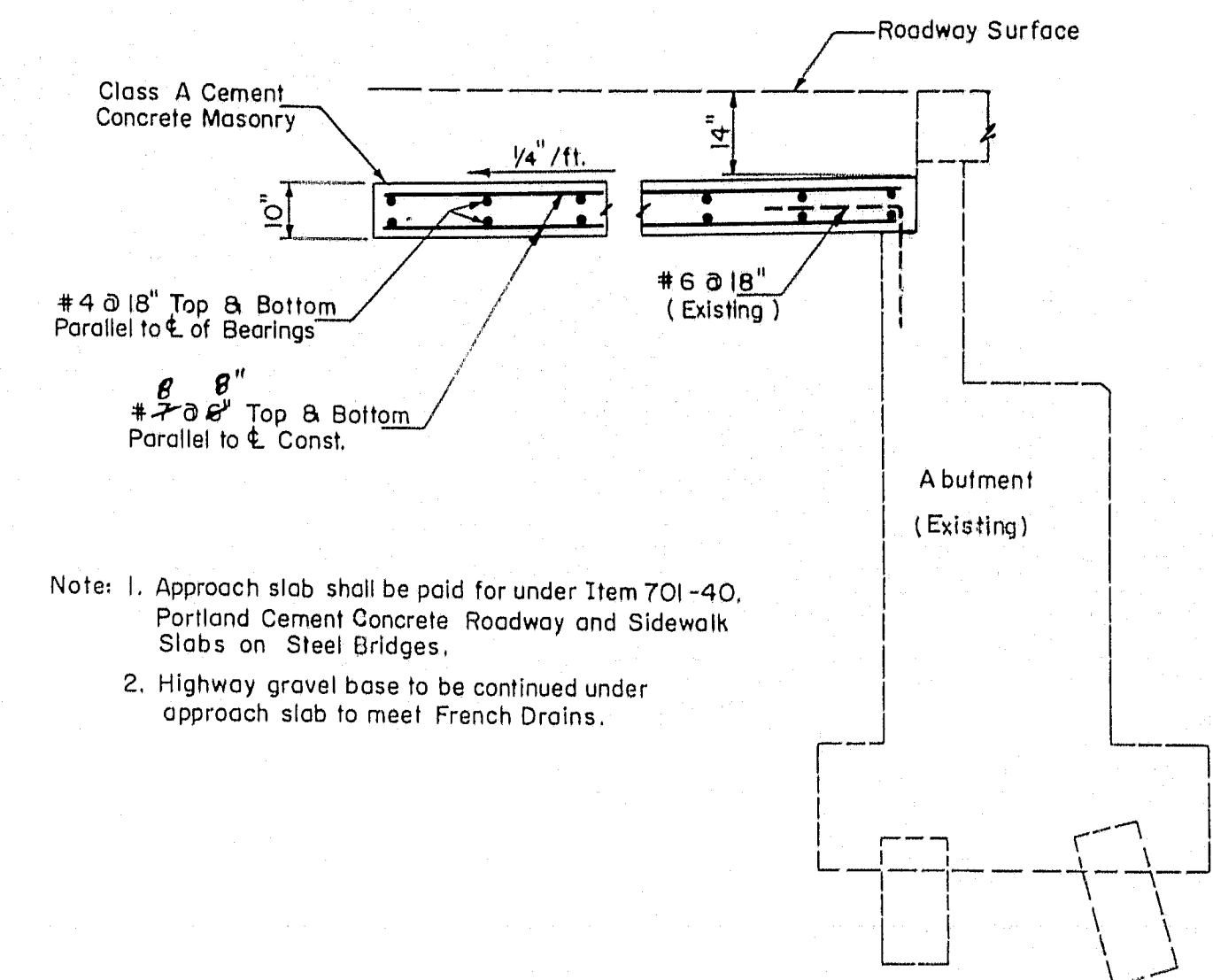
B.P.R. REG. NO.	STATE	PROJECT NO.	SHEET NO.	TOTAL SHEETS
1	MAINE	1-95-8(7)177	77	127

BANGOR INTERSTATE



LAYOUT OF APPROACH SLABS

Scale: 3/32" = 1'-0"



- Note: 1. Approach slab shall be paid for under Item 701-40, Portland Cement Concrete Roadway and Sidewalk Slabs on Steel Bridges.
2. Highway gravel base to be continued under approach slab to meet French Drains.

APPROACH SLAB SECTION

Scale: 3/8" = 1'-0"

ESTIMATED QUANTITIES

(NOT GUARANTEED)

PORTLAND CEMENT CONCRETE, ROADWAY AND SIDEWALK SLABS ON STEEL BRIDGES	100	CUYDS.
REINFORCING STEEL, DELIVERED	25,000	LBS.
REINFORCING STEEL, PLACING	25,000	LBS.
PORTLAND CEMENT	150	BBLS.

FINAL AS BUILT PLANS

THE CLARKESON ENGINEERING CO., INC.

DESIGN	CHECK	H. P.	BRIDGE NO.
DRAWN	E. K.	W. A. H.	SURVEY
	APPROVED	C. J. M.	PLOT

STATE HIGHWAY COMMISSION
OVER
INTERSTATE #95
OVER
BROADWAY
IN THE CITY OF
BANGOR
PENOBSCOT COUNTY
APPROACH SLAB LAYOUT & SECTION

SHEET 1 OF 1 AUGUSTA, MAINE

M-1199

